

ENQUIRY NO:		DATE:	
--------------------	--	--------------	--

CONTACT DETAILS






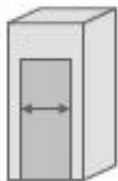


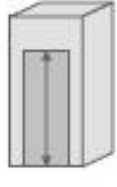

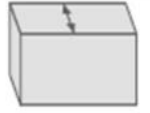

Company Name		Project Name	
Address		Project Address	
Email ID		Site Contact Person	
Telephone No		Contract Number	

PASSENGER ELEVATOR INFO

1. Project Type	Residential	Commercial	Hotel	2. Structure	New	Existing						
3. Model [Ref: Brochure]	SFJ-J101	SFJ-J102	SFJ-J103	Machine Location Quantity Floors Service Stop Passengers	6	8						
	SFJ-J104	SFJ-J105	SFJ-J106				10	13				
	SFJ-J107	SFJ-J108	SFJ-J109						16	18		
	SFJ-J110	SFJ-J111	SFJ-J112								21	other
	SFJ-J113	SFJ-J114	SFJ-J115									

TECHNICAL PARAMETERS

Carrying Capacity (kg)	450 630 800 1000 1250 1600	Floor to Floor Height	m
Speed (m/s)	1.0 1.5 1.75 2.0 2.5 3.0 other	Total Travel Height	m
Power Supply		Power Voltage (V)	
Frequency (Hz)		Lightning Voltage (V)	

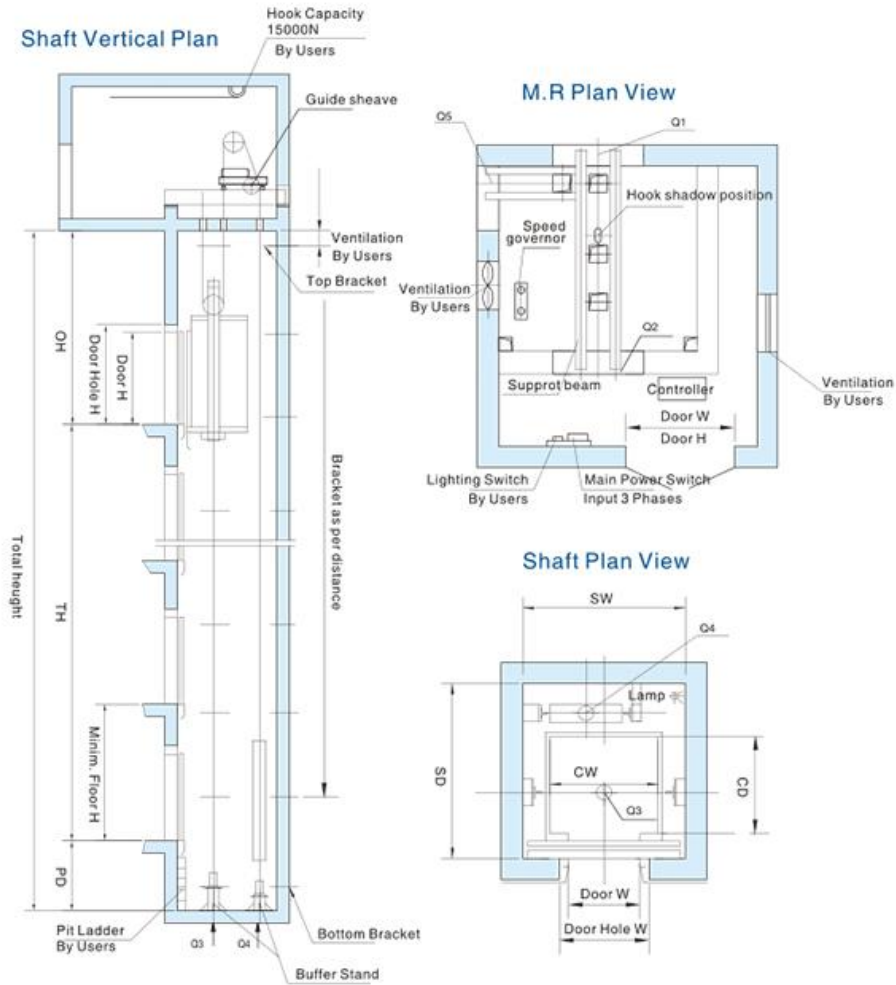
CAR SIZE					
Car Width mm		Car Depth mm		Car Height mm	
HOISTWAY SIZE				DOOR SIZE	
Shaft Width mm		Shaft Depth mm		Door Width mm	
Shaft Pit Depth mm		Overhead Height mm		Door Height mm	
MACHINE ROOM SIZE OR WITHIN HOISTWAY (ROOMLESS)					
M.R Width mm		M.R Depth mm		M.R Height mm	

DOCUMENTS ATTACHED

- A. Municipal Corporation Approved **Shaft Plan**

Name	Date	Signature	Stamp

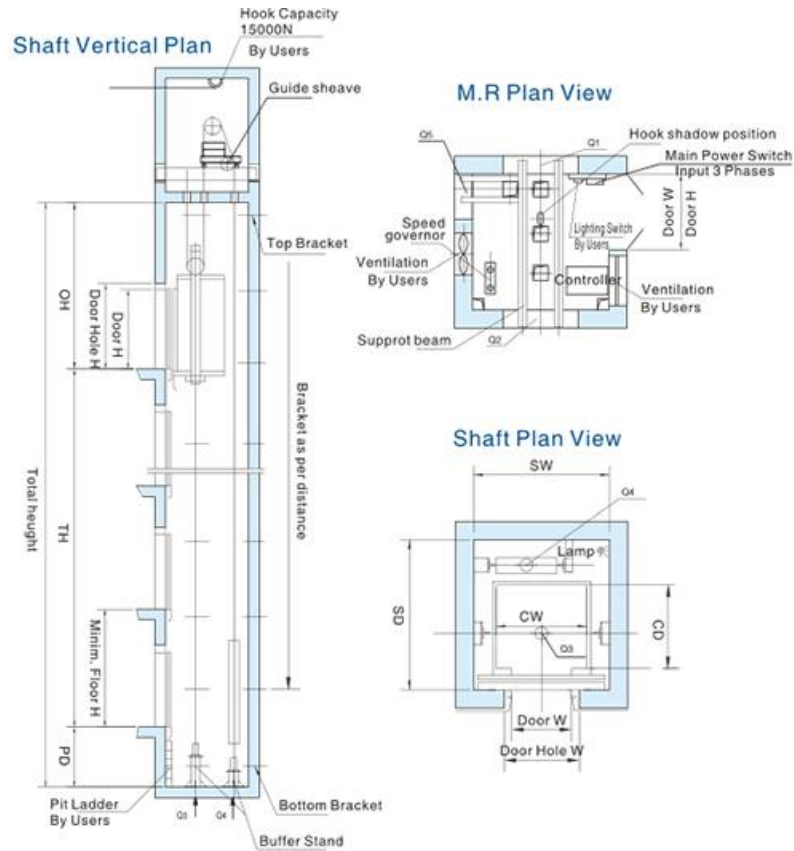
PASSENGER ELEVATOR PARAMETERS & LAYOUT



Carrying capacity (kg)	Passengers	Speed (m/s)	Car Size			Shaft Size		E(mm) Gate Width	F(mm) Gate Height	Q(mm) Top layer altitued	P(mm) Bottom depth
			A(mm) Width	B(mm) Depth	G(mm) Height	C(mm) Width	D(mm) Depth				
630	8	1.0	1100	1400	2500	1800	2100	800	2100	4400	1400
		1.5								4500	1500
		1.75								4600	1500
800	10	1.0	1400	1400	2500	2000	2100	800	2100	4400	1400
		1.5								4500	1500
		1.75								4600	1500
		2.0								5300	1900
1000	13	1.0	1600	1400	2500	2200	2100	900	2100	4400	1400
		1.5								4500	1500
		1.75								4600	1500
		2.0								4600	1500
		2.5								5300	1900
		3								6000	2500
1250	16	1.0	1950	1450	2500	2600	2200	1100	2100	4500	1700
1600	21	1.0	1950	1850	2500	2600	2700	1100	2100	4500	1700
		1.5									

* The schematic drawing of civil work is for reference only

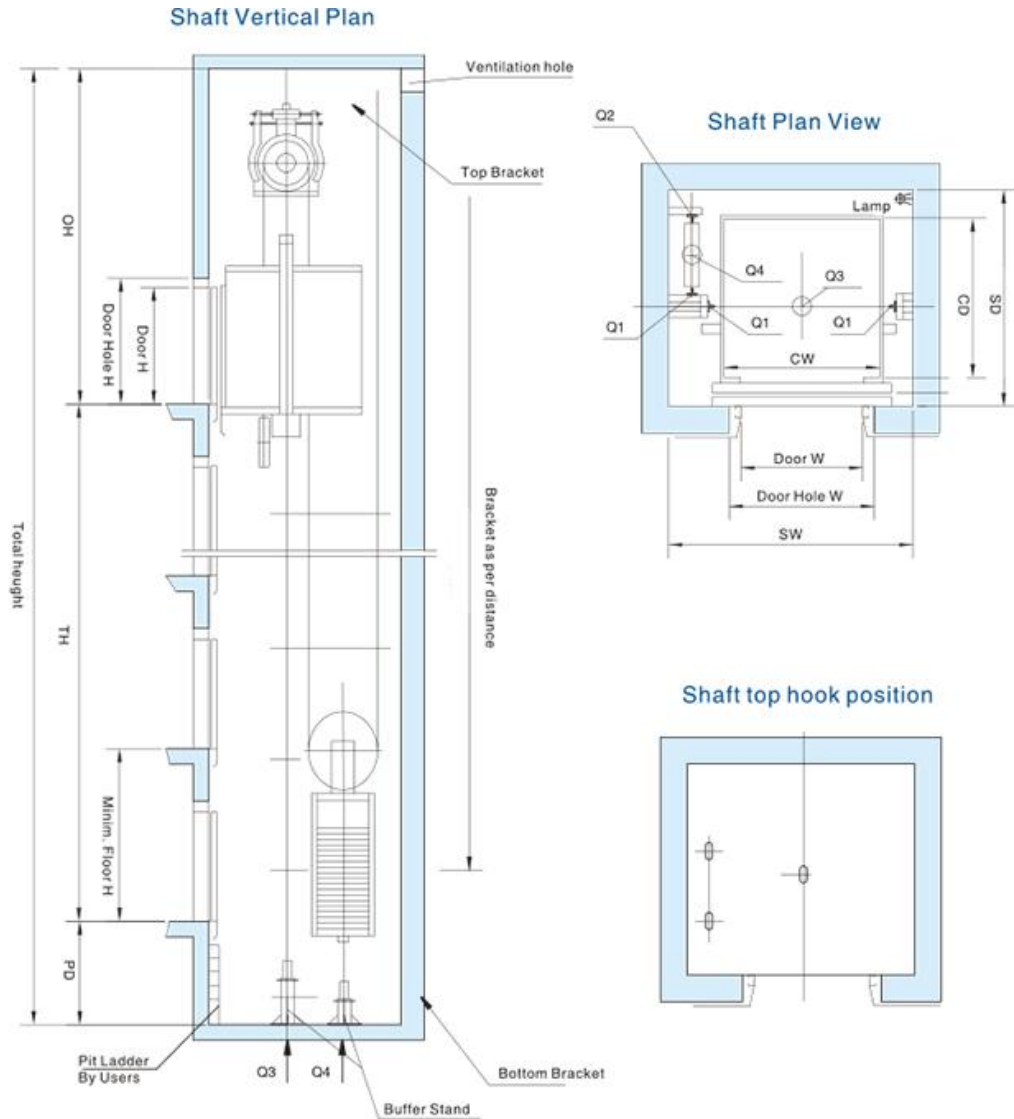
SMALL MACHINE ROOM PASSENGER ELEVATOR PARAMETERS & LAYOUT



capacity (kg)	Speed (m/s)	DWxDH(mm)	CWxCD(mm)	HWxHD(mm)	OH(mm)	PD(mm)	RWxRD(mm)	RH(mm)	Max(floor)	Max(Height) TH(m)
450(6)	1.0	800x2100	1400x850	1900x1500	≥ 4400	≥ 1400	1900x1500	≥ 2500	≤ 16	≤ 55
	1.5				≥ 4500	≥ 1500			≤ 16	≤ 55
630(8)	1.0	800x2100	1400x1100	1900x1750	≥ 4400	≥ 1400	1900x1750	≥ 2500	≤ 24	≤ 85
	1.5				≥ 4500	≥ 1500			≤ 24	≤ 85
800(10)	1.0	800x2100	1400x1350	1950x2000	≥ 4400	≥ 1400	1950x2000	≥ 2500	≤ 16	≤ 55
	1.5				≥ 4500	≥ 1500			≤ 24	≤ 85
	1.75			2050x2050	≥ 4600	≥ 1600	≤ 32		≤ 100	
	2.0				≥ 4900	≥ 1800	≤ 40		≤ 110	
1000(13)	1.0	900x2100	1600x1500	2150x2150	≥ 4400	≥ 1400	2150x2150	≥ 2500	≤ 16	≤ 55
	1.5				≥ 4500	≥ 1500			≤ 24	≤ 85
	1.75			2250x2200	≥ 4600	≥ 1600	≤ 32		≤ 100	
	2.0				≥ 4900	≥ 1800	≤ 40		≤ 110	
	2.5				≥ 5200	≥ 2200	≤ 48		≤ 140	
1150(15)	1.0	1100x2100	1800x1400	2400x2100	≥ 4400	≥ 1400	2400x2100	≥ 2800	≤ 16	≤ 55
	1.5				≥ 4500	≥ 1500			≤ 24	≤ 85
	1.75			2500x2200	≥ 4600	≥ 1600	≤ 32		≤ 100	
	2.0				≥ 4800	≥ 1800	≤ 40		≤ 110	
	2.5				≥ 5200	≥ 2200	≤ 48		≤ 140	
	3.0				≥ 5600	≥ 3200	≤ 56		≤ 160	
1350(18)	1.0	1100x2100	1950x1500	2550x2200	≥ 4400	≥ 1400	2550x2200	≥ 2800	≤ 16	≤ 55
	1.5				≥ 4500	≥ 1500			≤ 24	≤ 85
	1.75			2650x2300	≥ 4600	≥ 1600	≤ 32		≤ 100	
	2.0				≥ 4800	≥ 1800	≤ 40		≤ 110	
	2.5				≥ 5200	≥ 2200	≤ 48		≤ 140	
	3.0				≥ 5600	≥ 3200	≤ 56		≤ 160	
1600(21)	1.0	1100x2100	1950x1750	2550x2450	≥ 4400	≥ 1400	2550x2450	≥ 2800	≤ 16	≤ 55
	1.5				≥ 4500	≥ 1500			≤ 24	≤ 85
	1.75			2650x2550	≥ 4600	≥ 1600	≤ 32		≤ 100	
	2.0				≥ 4800	≥ 1800	≤ 40		≤ 110	
	2.5				≥ 5200	≥ 2200	≤ 48		≤ 140	
	3.0				≥ 5600	≥ 3200	≤ 56		≤ 160	
	4.0	≥ 5800	≥ 3800	≤ 64	≤ 220					

* The schematic drawing of civil work is for reference only

MACHINE ROOMLESS PASSENGER ELEVATOR PARAMETERS & LAYOUT



Carrying capacity (kg)	Passengers	Speed (m/s)	Car Size			Shaft Size		E(mm) Gate Width	F(mm) Gate Height	Q(mm) Top layer allitued	P(mm) Bottom depth
			A(mm) Width	B(mm) Depth	G(mm) Height	C(mm) Width	D(mm) Depth				
630	8	1.0	1100	1400	2100	1900	1800	800	2100	4100	1500
		1.5								4200	1700
		1.75								4300	1800
800	10	1.0	1400	1400	2350	2200	1800	800	2100	4100	1500
		1.5								4200	1700
		1.75								4300	1800
1000	13	1.0	1600	1400	2550	2400	1800	900	2100	4100	1600
		1.5								4200	1800
		1.75								4300	1900

* The schematic drawing of civil work is for reference only